

City of Gold Leaf

Kanazawa Sightseeing Booklet

Kanazawa—The City of Gold Leaf

During the Edo period (1603–1867), Kanazawa thrived as a castle town in the wealthy domain of Kaga. For generations, the Kaga Domain promoted culture and the arts, and traditional crafts flourished. This legacy lives on today, and visitors travel from around the world to experience Kanazawa’s historical cityscape and its rich culture of traditional crafts.

Kanazawa is also famous for gold leaf. Over ninety-nine percent of the gold leaf made in Japan is produced in Kanazawa. Handcrafted traditions live on in the masterful techniques of the city’s goldbeaters and gilders, supported by Kanazawa’s water and climate.

We hope that this guidebook will help visitors add a touch of gold to their Kanazawa visit.





CONTENTS

A Golden Legacy

History of Kanazawa Gold Leaf	4
About Traditional Gold Leaf	5
How It's Made: Traditional Process	6
How It's Made: Modern Process	8
Types of Metal Leaf	9

Experience Kanazawa

Getting Around: Buses & Bike Rental	11
Foldout Map of Kanazawa	12
Gold Leaf Workshops	
Imai Kinpaku	16
Kanazawa Katani	17
Sakuda Gold & Silver Leaf	18
Hakuza	19
Tajima Gold Leaf Crafts	20
Hakuichi	21
Gold-Knot	22
Museum	
Yasue Gold Leaf Museum	23

History of Kanazawa Gold Leaf

The Road to Making 99.9% of Japan's Gold Leaf

The Dawn of Kanazawa Gold Leaf

Gold leaf production in Kanazawa can be traced back to the late sixteenth century, when Maeda Toshiie (founder of the Kaga Domain) first commissioned gold and silver leaf. However, in the eighteenth century, the Tokugawa shogunate strictly limited manufacture and sale to the Hakuza guild in Edo (present-day Tokyo), and production in Kanazawa ceased.

The Revival of Gold Leaf

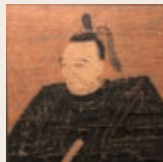
Goldbeating was revived in Kanazawa in the nineteenth century, when the Kaga Domain summoned goldbeaters from Kyoto for the reconstruction of Kanazawa castle. Kanazawa's craftsmen learned from the visiting goldbeaters and were commissioned by the Kaga Domain. However, when the craftsmen petitioned for the right to produce and sell gold leaf freely, the shogunate only granted them the right to sell. Nevertheless, the craftsmen built a workshop and made copper and tin leaf while beating gold under the guise of repairing damaged sheets from Edo. In time, they won the right to produce gold leaf openly.

The Rise of Goldbeating in Kanazawa

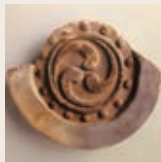
After its revival, gold leaf developed into a prominent industry during the Meiji era (1868–1912). With the dissolution of the Tokugawa shogunate's Kinza and Ginza gold and silver guilds, metal leaf production in Edo declined rapidly. By the mid-Meiji era, Kanazawa's goldbeaters formed a trade union to oversee quality and volume, and gold leaf grew into Kanazawa's second-largest industry after *habutae* silk fabric. In the 1910s, mechanized hammers dramatically increased productivity, and output grew to fill export demand as the production of German metal leaf plummeted during World War I.

Twentieth Century to the Present

From the 1930s, the spread of war and economic restrictions under the wartime government forced metal leaf producers to switch trades or close shop, leaving the industry in shambles. After World War II, gold leaf enjoyed renewed demand for lavish Buddhist altars, buoyed by decades of rapid economic growth. The collapse of the bubble economy in the 1990s dealt a blow to the industry, but manufacturers found new applications in food, cosmetics, accessories, architecture, and interior design.



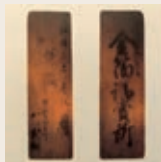
Maeda Toshiie, first lord of the Kaga Domain (Toujii Temple)



Gilded roof tile (Ishikawa Archaeological Foundation)



Gilding from Kanazawa castle (Modern History Archives, Tamagawa Library)



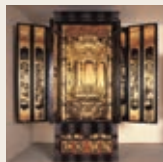
Gold leaf merchant sign granted to Koshino Sasuke by the Kinza gold guild



Miura Hikotaro, inventor of the mechanized goldbeating hammer



Miura Seihaiko Kojo goldbeating factory



Lavishly gilded Buddhist altar (Yasue Gold Leaf Museum)



Soft serve ice cream with edible gold leaf

Japan's Last Producers

Over 200 years have passed since the revival of gold leaf in Kanazawa. The art of goldbeating lived on in Kanazawa for several reasons. The waters of the Sai and Asano rivers were well suited to the production of goldbeating paper, and the Kaga Domain nurtured culture and supported traditional crafts.

Today, Kanazawa is Japan's last remaining producer of traditional gold leaf.



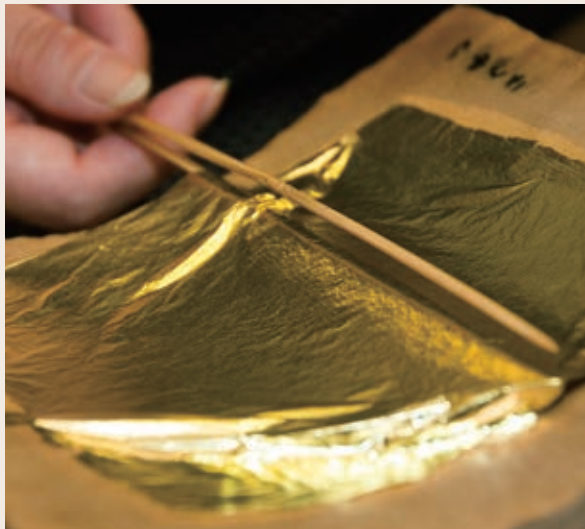
Statue of Maeda Toshiie
with a golden helmet
(Kanazawa Castle Park)

A Golden Legacy

Traditional *Entsuke* Gold Leaf

Traditionally made Japanese gold leaf is called *entsuke*. In 2014, *entsuke* was designated a Selected Conservation Technique for Cultural Properties, and in 2020 it was registered in the UNESCO Intangible Cultural Heritage entry for Traditional Skills, Techniques, and Knowledge for the Conservation and Transmission of Wooden Architecture in Japan.

While only twenty percent of the gold leaf produced in Japan is *entsuke*, its distinct luster and soft texture make it indispensable for both traditional crafts and the preservation and repair of Cultural Properties.



Above A craftsperson transfers gold leaf onto paper. The leaf is so delicate that a slight breeze or static electricity can tear it. Bamboo is used to avoid static.

Making Traditional Gold Leaf

The goldbeating process is divided into two parts. First, goldbeaters called *zumiya* cast an ingot of the desired metal, which they roll into a ribbon and then beat into

sheets 1/1,000 mm thick. These are then given to goldbeaters called *hakuya*, who further beat the gold to 1/10,000 mm.

Initial Goldbeating Stage (*Zumi*) Performed by craftspeople called *zumiya*



- 1) Pure gold is melted along with silver and copper.
- 2) The melted gold alloy is made into a bar.
- 3) The gold bar is passed through a roller repeatedly, stretching it into a 1/50 mm ribbon.
- 4) The ribbon of gold is cut into 6 cm squares.
- 5) The squares are placed between 12 cm sheets of kraft paper.



- 6) A packet of 200 sheets is wrapped in leather.
- 7) A craftsperson uses a mechanized hammer to beat the packet, causing the gold to expand.
- 8) The expanded gold is moved to a new packet of 18 cm sheets.



- 9) The gold is beaten with a mechanized hammer.
- 10) The gold is divided into four.
- 11) The gold is moved onto 19 cm sheets of *zumi* goldbeating paper.
- 12) A packet of 800 sheets is wrapped in leather.
- 13) The packet is beaten with a mechanized hammer.
- 14) The gold is moved onto 20 cm sheets of *zumi* goldbeating paper.
- 15) The packet is beaten with a mechanized hammer.



- 16) The individual gold sheets are transferred to kraft paper and given a light hammering to produce a matte finish.
- 17) The gold is folded into thirds.

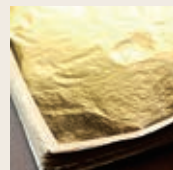
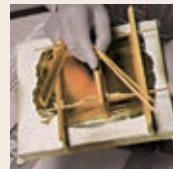
The resulting foil (1/1,000 mm) is called *uwazumi*.

The ratio of gold, silver, and copper determines the final hue

Gold sheets are bundled into a packet
↓
The gold is beaten thin



Final Goldbeating



Stage (*Haku*) Performed by craftspeople called *hakuya*

- 1) A goldbeater cuts the uneven sheets of gold *uwazumi* into 9–12 pieces, based on their thickness.
- 2) The gold is placed between sheets of *haku* goldbeating paper.
- 3) A packet of 1,800 sheets is wrapped in leather.
- 4) A mechanical hammer is used to beat the packet, which grows hot.
- 5) The packet is split up to cool.
 - ▶ The packet is beaten and cooled until the gold is 10 cm large.
- 6) The gold is moved to new goldbeating paper for finishing.
- 7) The packet is heated to remove moisture.
- 8) The goldbeater checks the sheets.
 - ▶ The packet is beaten and cooled until the gold reaches a thickness of 1/10,000 mm.
- 9) The finished sheets of gold leaf are individually checked and temporarily transferred to 100-page books of *mitsumata* paper.
- 10) The gold leaf is moved onto a leather board and individually cut to a standard size (e.g., 10.9 cm) with a bamboo tool.
- 11) The gold leaf is interleaved with *mitsumata* paper to create a set of 100 sheets.

The *uwazumi* gold is cut into squares

Hammering
↓
Cooling

Static electricity is carefully avoided

The final gold leaf (1/10,000 mm) is called *entsuke*.

A brief look at a complicated process.

Special paper is essential for every step of the process, so much so that it is said that the key to goldbeating is papermaking.

Paper Preparation Done by both *zumiya* and *hakuya*



Goldbeating Paper for *Zumi*

Handmade from rice straw with *kozo* mulberry fibers

Preparation Time: One week

- 1) The paper is dampened with water.
- 2) The packet is beaten with a mechanized hammer.
- 3) The sheets are peeled apart.
 - ▶ Steps two–three are repeated until complete.

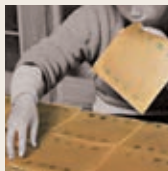


Goldbeating Paper for *Haku*

Handmade from *ganpi* fibers and special minerals, then treated in a solution of persimmon tannins, egg, and lye from rice straw

Preparation Time: 3–4 months

- 1) The paper is dampened with water.
- 2) The packet is beaten with a mechanized hammer.
- 3) The sheets are peeled apart.
 - ▶ Steps two–three are repeated until the sheets separate naturally.
- 4) The paper is treated in a lye solution.
- 5) The sheets are dried individually.
- 6) The paper is beaten again.
- 7) The sheets are separated, and the process is repeated until they don't stick together.
- 8) Steps four through seven are repeated two more times.
- 9) The paper is dried with a heat source, causing it to expand.
- 10) The expanded paper is beaten with a mechanized hammer and finished.



Making Modern Gold Leaf

The Mainstay of Kanazawa Leaf: *Tachikiri*

Eighty percent of Kanazawa's gold leaf is produced using modern methods. This type of gold leaf, known as *tachikiri*, developed in the 1960s as demand surged and the postwar economy boomed. Manufacturers adopted a new type of carbon paper and successfully simplified the gold leaf production process.

Today, the quality of *tachikiri* gold leaf is comparable to traditional *entsuke* gold leaf. Modern gold leaf is characterized by its bright, glossy finish.



Factory-made glassine paper is coated with carbon (plant soot), aluminum powder, casein, and a surfactant.

Modern Gold Leaf *Uwazumi* gold foil 1/1,000 mm thick is beaten into *tachikiri* gold leaf 1/10,000 mm thick.

1) Redividing

The process for modern gold leaf starts after the initial *uwazumi* goldbeating stage (see page 6). A goldbeater cuts the sheets of gold into 9–12 pieces, based on their thickness.



2) Bundling

The squares of gold are moved onto sheets of carbon-coated paper. Packets of 1,600–2,000 sheets are bundled in leather.



3) Beating

A mechanized hammer is used to beat the gold sheets to 1/10,000 mm. The bundled packet is opened and cooled repeatedly throughout the process. The goldbeater uses a powerful mechanized hammer with a large head.



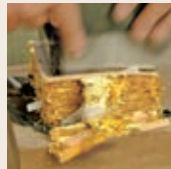
4) Booking

The gold sheets are moved onto new paper and stacked.



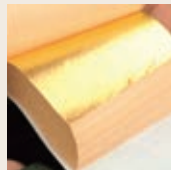
5) Trimming (*Tachikiri*)

A blade is used to cut the stack of gold leaf and paper into a neat square.



Finished *Tachikiri* Gold Leaf

The final leaf has a bright, glossy finish.



Gold Leaf

The color of gold leaf varies depending on the ratio of gold. Today, Ishikawa Prefecture's trade association for metal leaf specifies seven standard hues in addition to filling custom orders.

Basic Hues and Gold Ratios (%)

	<i>Gomo-shoku</i>	No. 1	No. 2	No. 3	No. 4	<i>Sanbu-shoku</i>	<i>Sada-iro</i>
Gold	98.912	97.666	96.721	95.795	94.438	75.534	58.824
Silver	0.495	1.357	2.602	3.535	4.901	24.466	41.176
Copper	0.593	0.977	0.677	0.670	0.661	—	—

Platinum Leaf

Platinum leaf is a thin metal leaf made from pure platinum using the same techniques as gold leaf.

Silver Leaf

Silver leaf and thread are widely used in textiles, fans, paper door coverings, wallpaper, fine art mountings, decorative cords, and even pharmaceutical products. Silver leaf may also be coated to produce a wide variety of colors, or patinated with sulfur to produce hues such as gold, red, blue, and black.



Colored silver leaf (*irohaku*)



Patinated silver leaf (*yakhaku*)



Dish with magnolia design in underglaze gold by Yoshita Minoru. The gold is applied beneath the glaze, producing a unique effect.



Decorative box, *Tatsuta*, by Fujita Kyohei. Mold-blown glass with thick gold, silver, and platinum leaf inclusions.



Jewelry box with cut foil, *Mandarin Duck*, by Nishide Daizo. Decorated with *kirikane*—gold or silver foil cut into geometric shapes.

(Yasue Gold Leaf Museum Collection)



Welcome to Kanazawa, the City of Gold Leaf

No visit to Kanazawa is complete
without trying a gold leaf workshop.
Make an original piece to remember
your trip.



Bus Transportation

Kanazawa Loop Bus (Left & Right Loop) www.hokutetsu.co.jp

Buses to main sightseeing spots in Kanazawa (runs every 15 min.)

(Leftward routes operate on weekends and public holidays.)

Fare per Ride: Adults ¥210, Children ¥110 or Kanazawa One Day Pass (Adults ¥800, Children ¥400) (domestic IC cards accepted)

Contact: Hokuriku Railroad Telephone Service Center TEL 076-234-0123



Machi Bus Kanazawa Shopping Liner www.machibus.com

Operates on Sat., Sun., and national holidays. Runs from Kanazawa Sta. to downtown every 20–30 min.

Fare per Ride: Adults ¥100, Children ¥50 (domestic IC cards accepted)

Contact: West Japan JR Bus Company TEL 076-225-8004

Kanazawa Town Mgmt. Org. TEL 076-224-8112



Machi-Nori Bicycle Sharing Service www.machi-nori.jp

Machi-Nori is a public share cycle service. Rent and return electric powered bicycles

from over 75 cycle ports throughout the city. Download the convenient smartphone app to register!

Hours: Available 24 hours a day

Single Use Membership: ¥165 for the first 30 min., plus ¥110 for each additional 30 mins
(pay with credit card or Docomo)

One Day Pass: ¥1,650/day cash purchase from the Machi-Nori head office/participating locations

OR ¥1,430/day from the official website (credit only) or a convenience store

Contact Machi-Nori for more details

Contact: Machi-Nori Head Office TEL 076-255-1747 (9:00 a.m.–6:00 p.m.)



Only 5 of 500 units.
Gold leaf specification "Haku-Nori"



Kanazawa Craft Index

The Kanazawa Crafts Index features a map and database with information about craft-related artists, artisans, companies, and groups active in the Kanazawa area.

www.kanazawacraft.jp/craftindex

(Part of the Kanazawa Craftwork Business Creation Agency website)



Official Kanazawa Tourism Website **Visit Kanazawa**

Check the latest information
on what to do in Kanazawa.


<https://visitkanazawa.jp>





The "Gold Leaf Spirit Well" at the center of the store is a golden spring. The well was inspired by Kinjo Reitaku spring, from which Kanazawa takes its name. The well is covered in pure gold leaf and contains 30,000 gold beads.

Reserve a
Gold Leaf
Workshop

 **076-223-8989** (See business hours)

Please call for same or next-day reservations.
See website for online reservation form.

Workshop Times: 1) 10:30 a.m. 2) 1:00 p.m. 3) 3:00 p.m.
(For larger groups, please inquire)

Duration: 30 minutes

Price: Starting at ¥770~/person

Number of people: 1-30

Recommended Age: Appropriate for all ages

Special Benefits: 10% off in-store purchases and more



Create your
own design!



Hours: 10:00 a.m. – 5:00 p.m.


Closed: Sun., Mon., Public and New Year's holiday
Parking available for cars and charter buses.



MAP / B1

Imai Kinpaku Main Shop

7-3 Saiwai-machi, Kanazawa, Ishikawa

 076-223-8989

Access by **Kanazawa Loop Bus** or **Machi Bus**

7-minute walk from Honda-machi bus stop



Kanazawa Katani is a gold leaf manufacturer with 120 years of history. Located between the Higashi Chaya district and the Omicho market. Visitors can enjoy gold leaf workshops. Experience the excitement and thrill of actually handling and applying gold leaf.



The unique experience of a gold leaf manufacturer's directly managed shop is different.



Gold leaf application to genuine leather keychains is extremely popular!



Located on a quiet road off a main street.
Large groups are welcome (please inquire in advance).

Reserve a
Gold Leaf
Workshop

☎ 076-231-1566

Same-day reservations: 9:00 a.m.–4:00 p.m.
See website for online reservation form.

Workshop Hours: 9:00 a.m.–5:00 p.m.
(Same-day reservations: 9:00 a.m.–4:00 p.m.)

Duration: 60 minutes

Price: Starting at ¥1,800~/person

Group Size: 1 to 40 people (For larger groups, please inquire)

Recommended Age: 7 and up

Precut stencils make
decorating easy!



MAP / A1

B Kanazawa Katani Gold Leaf Workshop

6-33 Shimoshincho, Kanazawa, Ishikawa

☎ 076-231-1566

Access by **Kanazawa Loop Bus** or **Machi Bus**

5-minute walk from Musashigatsuji Omi-cho Market bus stop

Hours: 9:00 a.m.–5:00 p.m.

Closed: New Year's holiday

Parking: 4 spaces

(Call in advance for big bus & small bus parking)



Sakuda Gold & Silver Leaf was established in 1919. Visitors to the main store near the Higashi Chaya district can enjoy workshops or see how gold leaf is made. The second floor features a dazzling array of gilded screens and gold crafts.

Make an original souvenir!



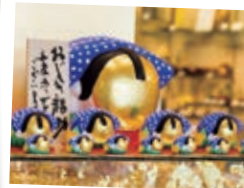
Workshop participants can decorate chopsticks, plates, jewelry boxes, compact mirrors, etc.



Learn how gold leaf is made.



The second floor features breath taking craft objects. Even the bathroom is gilded with gold and platinum.



The store offers beautiful craft objects, food, and cosmetic products, all glistening with artisanal gold.

Reserve a Gold Leaf Workshop

 076-251-6777

Same-day reservations welcome. See website for online reservation form.

Workshop Times: 1) 9:00 a.m. 2) 10:30 a.m.
3) 1:00 p.m. 4) 3:00 p.m.

Duration: 60 minutes

Price: Starting at ¥1,000~/person

Group Size: 1 to 50 people

(Max. 30 on Sun. and holidays)


Special Benefits: Coupon for 10% off in-store products



MAP / A1

 **Gold Leaf Sakuda Main Store**

1-3-27 Higashiyama, Kanazawa, Ishikawa

 076-251-6777

Bus (Right Loop) – 4-min. walk from Hashiba-cho (Kazue-machi) bus stop

Bus (Left Loop) – 3-min. walk from Higashiyama 3-chome bus stop

Hours: 9:00 a.m. – 5:00 p.m. (May vary by season)

Open: 365 days a year

Parking: 6 spaces (Buses under 7 meters)



Hakuza produces gold leaf for the restoration of National Treasures and Important Cultural Properties. Visitors can enjoy a private gold leaf workshop within the Higashi Chaya district. Ideal for families and small groups.



The "Golden Storehouse" features a gilded platinum-leaf exterior and 24 kt gold-leaf interior.



Relax and enjoy the teahouse architecture of the workshop space. Decorate a pair of chopsticks for a popular, practical souvenir.



Seasonal plate: choose from cherry blossom, goldfish, rabbit, or camellia patterns. Great for groups.

Reserve a
Gold Leaf
Workshop

Hakuza "Keiko Dokoro"
☎ 076-252-3641

Workshop Times: 1) 10:00 a.m. 2) 1:30 p.m. 3) 2:30 p.m.

Duration: 30 minutes

Price: Starting at ¥1,870-/person

Group Size: 1 to 4 people

Recommended Age: 10 and up

(Younger children must be accompanied by an adult)

Closed: Tue. and Wed.

Chopsticks are a
workshop favorite!



MAP / A1

D Hakuza Hikarigura

1-13-18 Higashiyama, Kanazawa, Ishikawa

☎ 076-251-8930

Bus (Right Loop) – 3-min. walk from Hashiba-cho (Kazue-machi) bus stop

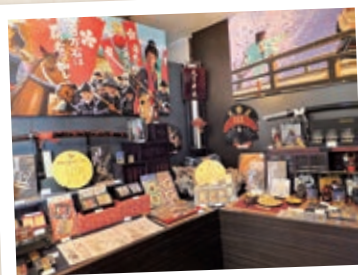
Bus (Left Loop) – 5-min. walk from Higashiyama 3-chome bus stop

Hours: 9:30 a.m. – 5:30 p.m.

Open: 365 days a year



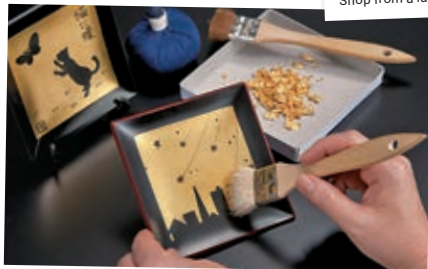
Established in 1897 as a gold leaf wholesaler, Tajima prides itself on finding unique ways to enjoy gold leaf. Visitors to their store, located near the Omicho market, can enjoy gold leaf workshops and shop for charming accessories and retro merchandise.



Shop from a large selection of crafts and souvenirs.



Decorate a canister or other item with gold leaf stickers.



Workshops are offered for one group at a time. Call ahead to reserve. The shop is located near the Omicho market, making it a convenient stop between sightseeing or shopping.

Reserve a
Gold Leaf
Workshop

☎ 076-201-8486

Call between 10:00 a.m. and 4:00 p.m.
Same-day reservations welcome.

Workshop Hours: 10:00 a.m.–4:00 p.m.

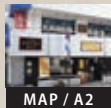
Duration: 30 minutes

Price: Starting at ¥1,500–/person

Group Size: 1 to 8 people

Recommended Age: 3 and up

Gold-coin-themed goods
and craft workshops!



E Tajima Gold Leaf Crafts

Prasada Musashi 2F, 11-1 Musashi, Kanazawa, Ishikawa ☎ 076-201-8486

Access by **Kanazawa Loop Bus** or **Machi Bus**

2-min. walk from Musashigatsuji Omi-cho Market bus stop

OR 12-min. walk from Kanazawa Sta.

Hours: 10:00 a.m.–4:00 p.m.

Closed: Tue. (unless a holiday)

Closes for summer and New Year's holidays.

MAP / A2



H A K U I C H I

HAKUICHI

kanazawa.hakuichi.co.jp



Hakuichi works to expand the horizons of gold leaf by exploring new possibilities in various fields. The Hakuokan gold leaf museum welcomes small groups and large tours. Visitors can choose a workshop course that fits their schedule.

Reserve a Gold Leaf Workshop

☎ 076-240-8911

Same-day reservations welcome. See website for online reservation form.



Workshop Hours: 9:00 a.m. – 5:00 p.m. (Last admission: 4:00 p.m.)

Duration: 20–50 min. (gold leaf application) or 5–10 min./person (traditional handling techniques)

Price: Starting at ¥1,500–/person (gold leaf application) or ¥1,000 (traditional handling techniques)

Group Size: 1 to 100 people for gold leaf application, 1 to 4 people for gold leaf handling

Recommended Age: Appropriate for all ages
English instruction available.

Decoration workshops,
20 min. or longer



The “Room of Gold Leaf” is gilded with over 10,000 sheets of gold and features a spectacular projection show inspired by lord Maeda Toshie’s arrival at Kanazawa castle.



Pick from gold leaf workshops to fit your schedule, budget, and level.



Gold leaf is so thin that the slightest breeze will send it flying. Learn how masters handle gold leaf using traditional tools.



MAP / B1

F Hakuichi Main Store Hakuokan

2-1-1 Morito, Kanazawa, Ishikawa

☎ 076-240-8911

Access by car: 5 min. from Kanazawa-Nishi IC or 15-min. from Kanazawa Sta.

Hours: 9:00 a.m. – 6:00 p.m.

Winter hours (Dec. 1–End of Feb.) 9:00 a.m. – 5:00 p.m.

Closed: Jan. 1

Parking: 20 spaces, up to 6 charter buses

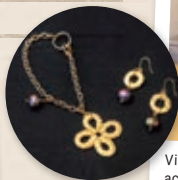


Gold-Knot specializes in gold leaf jewelry, a type of accessory that has the deep luster of metal but is light and comfortable. Gold-Knot promotes gold leaf jewelry to international locations such as New York and Paris from their store near Oyama Shrine.



Unique gold and platinum leaf accessories.

Gold-Knot's original lace accessories are gilded with multiple layers of gold.



Visitors can learn to use a tatting shuttle to make original lace accessories. Gold-Knot will then add gold leaf and gems to your creation and mail the finished piece. Includes an original gold-leaf patterned tatting shuttle (value of ¥4,400)!

Reserve a
Gold Leaf
Workshop

☎ 076-205-6202

Call between 10:30 a.m. and 6:00 p.m.
See website for online reservation form.

Workshop Hours: 11:00 a.m. to close

Duration: 90 minutes

Price: Starting at ¥9,900-/person (Includes the price of silk thread, tatting shuttle, freshwater pearls/other gems, metal fittings, and gold leaf)

Group Size: 1 to 4 people

Recommended Age: 6 and up



"Dancing Leaves" brooch in gold and platinum leaf. These large brooches are light and won't disrupt the silhouette of your outfit.



MAP / A2

G Gold-Knot

5-6 Minamicho, Kanazawa, Ishikawa ☎ 076-205-6202

Access by **Kanazawa Loop Bus** or **Machi Bus**

0 min. from the Minamicho Oyama Jinja Shrine bus stop

OR 16-min. walk from Kanazawa Sta.

Hours: 11:00 a.m. – 6:00 p.m.

Closed: Wed., 2nd Sun. of the month, New Year's holiday, etc.

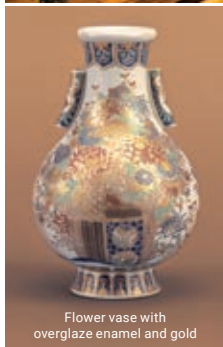
Kanazawa Yasue Gold Leaf Museum



The Yasue Gold Leaf Museum was founded in 1974 by Yasue Takaaki (1898–1997) to preserve the legacy of goldbeating and gold leaf craft for future generations. It is one of the world's few museums dedicated to gold leaf. The museum introduces the goldbeating process and related tools, and exhibits fine art and craft works featuring gold and gold leaf.

The museum was donated to the city of Kanazawa in 1985 and relocated to Higashiyama in 2010. The Higashiyama area was home to Kanazawa's goldbeaters at the end of the Edo period (1603–1867), and many gold-leaf businesses still operate there. The museum building was inspired by traditional Kanazawa storehouses.

The museum also houses the Kanazawa-Haku Research Center, which conducts research for the promotion of Kanazawa metal leaf.



Flower vase with overglaze enamel and gold



Inkstone box with incised gold carp by Mae Fumio



Kagata metal inlay vase by Takahashi Kaishu



Kanazawa Yasue Gold Leaf Museum

1-3-10 Higashiyama, Kanazawa, Ishikawa 920-0831
 TEL 076-251-8950 FAX 076-251-8952
www.kanazawa-museum.jp/kinpaku/



Hours: 9:30 a.m. – 5:00 p.m. (Last admission: 4:30 p.m.)

Closed: Tue. (or next weekday if Tue. is a holiday)

Museum closes between exhibits and Dec. 29–Jan. 3

Admission:

General	¥310
Group (20 people or more)	¥260
Seniors (65+) and visitors w/ physical disability certificate*	¥210
*Mirairo ID or Shogaisha Techo.	(Free on holi.)
High school age or younger	Free

Kanazawa-Haku Research Center

Yasue Gold Leaf Museum 3F, 1-3-10 Higashiyama,
 Kanazawa, Ishikawa 920-0831
 TEL 076-225-8941 FAX 076-225-8942
www.kanazawahaku-giken.jp





Access by Train (JR)

- **From Tokyo**
Tokyo Sta. → Kanazawa Sta.: 2 hrs. 30 min. (Hokuriku Shinkansen)
- **From Osaka**
Osaka Sta. → Kanazawa Sta.: 2 hrs. 30 min. (Ltd. Exp. Thunderbird & Hokuriku Shinkansen)
- **From Nagoya**
Nagoya Sta. → Kanazawa Sta.: 2 hrs. 30 min.
(Tokaido Shinkansen, Ltd. Exp. Shirasagi & Hokuriku Shinkansen)

Access by Car

- **From Tokyo**
Nerima IC → Fujioka JCT → Joetsu JCT → Kanazawa-Higashi IC: 5 hrs. 20 min.

Access by Plane

- **From Tokyo**
Haneda (HND) → Komatsu (KMQ): 1 hr.
KMQ → Kanazawa Sta.: 40 min. by
Limousine Bus

Kanazawa-Haku Research Center <https://www.kanazawahaku-giken.jp>

Yasue Gold Leaf Museum 3F, 1-3-10 Higashiyama, Kanazawa, Ishikawa 920-0831